

## SOITRON RPA (ROBOTIC PROCESS AUTOMATION)

You can use the Robotic Process Automation (RPA) tool for any repetitive process that follows some predefined rules. Such processes can be taught to be performed by a robot or software. Software robots can do the work instead of people and thus relieve staff from having to do routine tasks. This allows staff to engage in more creative and sophisticated activities.



## WHAT CAN YOU AUTOMATE?

### BUSINESS PROCESSES

- Quote-to-cash
- Procure-to-pay
- Data migration and data entry into internal systems
- Extract data from PDF files, document scans, and so on
- Regular report generation
- Bulk email generation

### PROCUREMENT AND OPERATION

- Inventory record updates
- Issuance of refunds
- Processing of receivables
- Supplier record updates

### FINANCE

- Financial planning
- Data processing and archiving
- Reporting

### CUSTOMER SERVICE

- Customer profile loading
- Acquisition of detailed billing information
- User information updates
- Addressing simple reoccurring customer issues

### TECHNICAL SUPPORT

- Regular diagnostics and testing
- Troubleshooting
- Access management
- Audits
- Infrastructure checks
- Software installation

### ADMINISTRATION

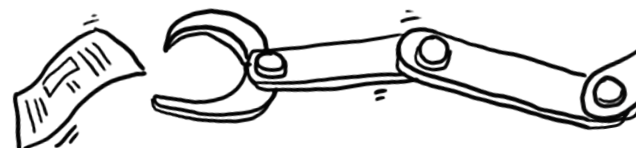
- Invoice processing
- CRM updates
- Contract amendments

### HR

- Candidate acquisition
- Past employment history verification
- Recruitment, onboarding and terminations
- Wage automation
- HR Virtual Assistant

### PROCESS MANAGEMENT

- Task planning based on defined conditions
- Project set-up
- Task tracking
- Work flow set-up and tracking
- Project schedule updating
- Budget updating



# ROBOTIC PROCESS AUTOMATION

## RPA BENEFITS

Software robots help to optimize the costs of such activities while creating additional work capacity in the company. Operational and business parameters in areas such as customer service are improved, and errors are completely eliminated.



### HIGHER PRODUCTIVITY

- Improved process accuracy
- Reduced production cycle time
- Increased staff productivity
- Improved SLA compliance
- Availability 24/7/365 along with a free capacity transfer
- Reduced error rates and process variations



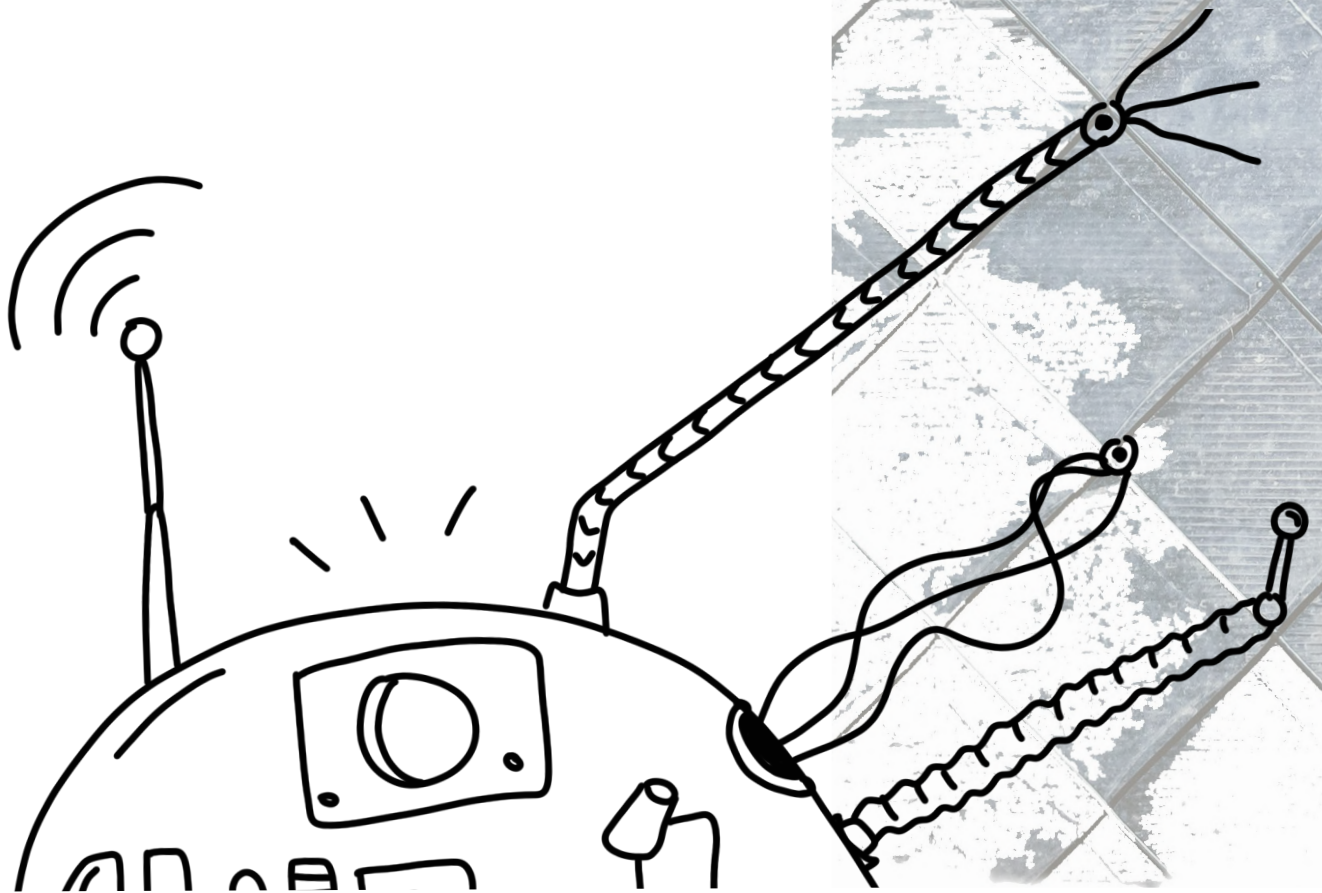
### IMPROVED CUSTOMER EXPERIENCE

- New business model creation
- Reduced time to market for new and innovative products and services
- Process transformation and design thinking



### COST OPTIMIZATION

- Return on investment (ROI)
- Increased capacity
- Time to achieve ROI
- Reduced and avoided costs





## SOITRON RPA SERVICES

In our portfolio, you can choose from the following RPA service packages:

### CONSULTATION AND ANALYSIS

We audit and optimize existing processes. In the initial phase, we map the processes and calculate the automation potential, including payback time estimates. Based on that, we then produce an analysis of automation suitability in your company. We identify opportunities for automation and recommend possible solutions.



### FULL RPA DELIVERY

We will deliver a full RPA solution from designing the solution to implementing the software robot.

### TRAINING OF PROFESSIONALS

Our certified experts will train your developers or business analysts in the RPA technology.



### POST-IMPLEMENTATION SUPPORT

We provide post-implementation support, the updating of the automation we designed, and the monitoring of the entire process.

### CERTIFIED EXPERTS AND LICENSE SALES

We provide necessary licences from multiple technology partners such as UiPath and Blue Prism, including certified infrastructure, security and solution design experts, business analysts, and developers.



## TECHNOLOGY

As a supplier of RPA technologies, we ensure full security of the RPA platform for the purposes of individual process automation. Moreover, we understand how the IT infrastructure functions as a whole, which makes the process of implementing more complex RPA solutions much faster.

### ROBOTIC PROCESS AUTOMATION (RPA)

RPA is an automation tool that is available 24/7 and is not prone to human error or fatigue. It is based on the work of **software robots**. Their job is to perform repetitive tasks based on predefined instructions normally done by humans.

### BUSINESS PROCESS MANAGEMENT (BPM)

We use BPM technologies primarily to automate simpler processes using **workflow management tools**.

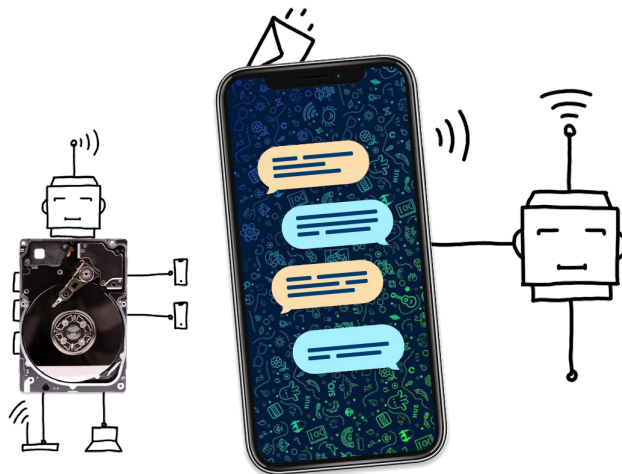
### ARTIFICIAL INTELLIGENCE (AI) TECHNOLOGIE

If required, Soitron can also **extend RPA with AI technology**. AI is used to process unstructured data that would otherwise have to be processed by a human (employee).

- **Optical Character Recognition (OCR)**  
smart technology used to automate things such as customer or employee on-boarding, the processing of documents and invoices, and so on.
- **Natural Language Processing (NLP)**  
(mail.bot, chat.bot, voice.bot)

### WHY IMPLEMENT RPA WITH SOITRON?

- **Many years of experience** in RPA implementation
- **Comprehensive end-to-end solutions.**
- RPA implementation on-premise or **as a service.**
- **AI technology extensions** (OCR, chatbot, and ML)
- **Sectoral expertise**, especially Finance, Distribution, and Retail
- Leading edge technologies: **UiPath, Blueprism and Automation Anywhere.**



### SOITRON, member of SOITRON Group

Soitron is a Central European integrator operating in the IT market since 1991. The company's philosophy is to constantly move forward, and that is why it is a leader in implementing unique technologies and innovative solutions. It offers its clients products and services in the field of robotization and process automation, cybersecurity, data centres, IoT solutions, IT outsourcing, communication and network solutions, IT support and advisory. Its product portfolio includes smart police car solutions – Mosy and cybersecurity services – VOID Security Operations Center.

Soitron is a part of the Soitron Group and employs more than 800 international experts. The group brings together professional teams in Slovakia, the Czech Republic, Romania, Turkey, Bulgaria, Poland, and the UK.